

Lessons from Asian Art: *Material World*

Focus Works For
Middle School Lesson





Tibetan. [Buddhist Prayer Wheel](#), 19th century. Copper, bronze, wood, 8 7/8 × 2 3/4 inches. Detroit Institute of Arts, Gift of Frederick Stearns. 90.1S14489



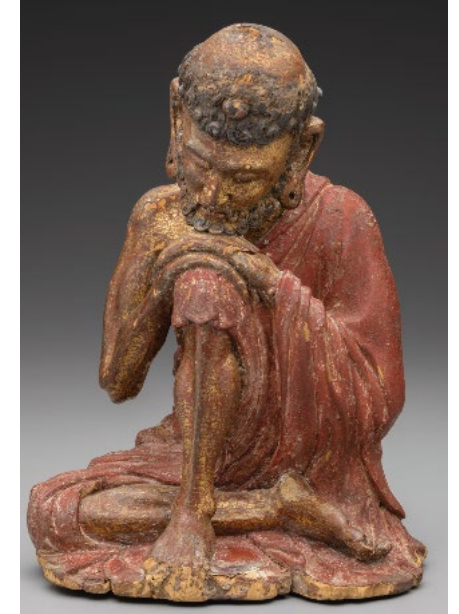
Tibetan. [Turquoise Ornament](#), 19th century. Turquoise, coral, gold, silver, thread, Overall (with tassel): 12 × 1 1/16 × 2 1/4 inches. Detroit Institute of Arts, Founders Society Purchase with funds from Friends of Asian Art, J. Lawrence Buell, Jr. Fund, and Mr. and Mrs. Alvan Macauley, Jr. Fund. 1989.75



Tibetan. [Turquoise Ornament](#), 19th century. Turquoise, gold, silver, and coral, 4 1/2 × 3 × 1 3/4 inches. Detroit Institute of Arts, Founders Society Purchase with funds from Friends of Asian Art, J. Lawrence Buell, Jr. Fund, and Mr. and Mrs. Alvan Macauley, Jr. Fund. 1989.74



Chinese. [Standing Guanyin with Child](#), 19th century. Ivory and paint, 11 3/4 × 2 3/4 × 2 1/4 inches. Detroit Institute of Arts, Gift of K. T. Keller. 63.185



Chinese. [Shakyamuni as an Ascetic](#), late 13th–early 14th century. Wood with lacquer, gilding, and traces of color, 11 3/4 × 8 1/8 × 6 1/2 inches. Detroit Institute of Arts, City of Detroit Purchase. 29.172



Indian. [Page from Manuscript of the "Perfection of Wisdom in Eight Thousand Verses,"](#) ca. 1160. Ink and opaque watercolor on palm leaf, 2 1/8 × 17 7/8 inches. Detroit Institute of Arts, Gift of P. Jackson Higgs. 27.586.1A



Japanese. [Sutra Scroll \(Jingoji Sutra\)](#) (detail), 1183–85. Gold and silver ink on indigo paper; gilded copper or silver roller, 10 × 123 inches. Detroit Institute of Arts, Founders Society Purchase, L. A. Young Fund. 61.5





Indian. [Page from Manuscript of the "Perfection of Wisdom in Eight Thousand Verses,"](#) ca. 1160. Ink and opaque watercolor on palm leaf, 2 1/4 x 18 1/2 in. Detroit Institute of Arts, Gift of P. Jackson Higgs. 27.586.126A



Indian. [Page from Manuscript of the "Perfection of Wisdom in Eight Thousand Verses,"](#) ca. 1160. Ink and opaque watercolor on palm leaf, 2 1/4 x 18 1/2 in. Detroit Institute of Arts, Gift of P. Jackson Higgs. 27.586.127A



Indian. [Page from Manuscript of the "Perfection of Wisdom in Eight Thousand Verses," ca. 1160.](#) Ink and opaque watercolor on palm leaf, 2 1/4 x 18 1/2 in. Detroit Institute of Arts, Gift of P. Jackson Higgs. 27.586.248A



Indian. [Page from Manuscript of the "Perfection of Wisdom in Eight Thousand Verses," ca. 1160.](#) Ink and opaque watercolor on palm leaf, 2 1/4 x 18 1/2 in. Detroit Institute of Arts, Gift of P. Jackson Higgs. 27.586.249A



Korean. *Bojagi*, 1960–80. Silk, 26 1/2 × 28 inches. Detroit Institute of Arts, Museum Purchase, Charles M. Endicott Memorial Fund. 2018.9



Korean. *Bojagi*, early 20th century. Textile, 21 × 21 inches. Detroit Institute of Arts, Museum Purchase, Ancient Art Deaccession Fund, gift from the Gibbs-Williams Fund by exchange. 2015.266



Kumjoo Ahn (Korean, born 1967). *Bojagi*, 2008. Silk, cloth, 16 × 16 1/2 × 18 1/2 inches. Detroit Institute of Arts, Museum Purchase, Ancient Art Deaccession Fund, gift from Mardiros Hagopo Bozyan by exchange. 2015.72



Korean. *Bojagi*, 20th century. Silk, 29 × 29 inches. Detroit Institute of Arts, Museum Purchase, Charles M. Endicott Memorial Fund. 2018.8



Korean. *Bojagi*, 20th century. Silk, cloth, 24 × 25 inches. Detroit Institute of Arts, Gift of the Kang Collection Korean Art, NY. 2015.73



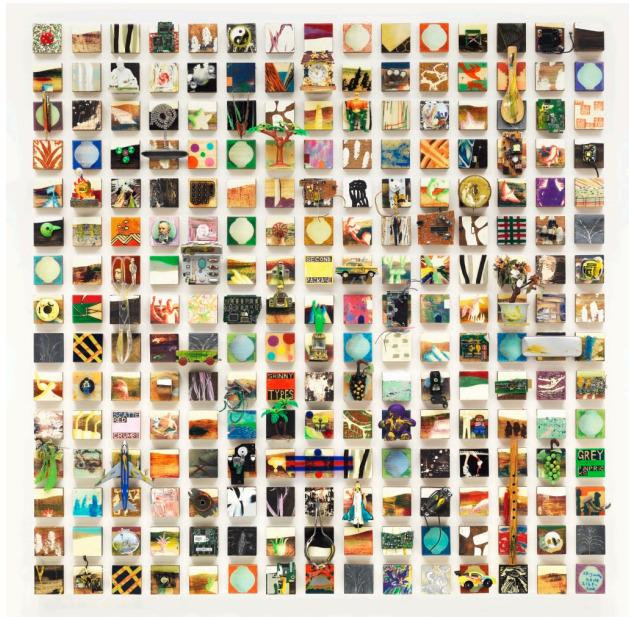
Korean. *Bojagi*, ca. 1980. Silk, cloth, 25 1/4 × 24 inches. Detroit Institute of Arts, Museum Purchase, with funds from the Charles M. Endicott Memorial Fund, Stoddard Fund for Asian Art, and the Asian Art General Fund. 2018.10



Kumjoo Ahn (Korean, born 1967). *Bojagi*, 1990. Silk, cloth, 20 1/8 × 20 inches. Detroit Institute of Arts, Gift of Kang Collection Korean Art Gallery. 2015.316



Korean. *Bojagi*, mid-late 20th century. Silk, cloth, 29 1/4 × 27 1/4 inches. Detroit Institute of Arts, Museum Purchase, Friends of Asian Arts and Cultures Acquisition Fund. 2015.71



Ilk-Joong Kang (American, born Korea, 1960). [Happy World—Scattered Crumbs](#), 2011–2014. Mixed media on wood, 59 × 59 × 6 1/2 inches. Detroit Institute of Arts, Museum Purchase, Contemporary Art Fund. 2015.66



Korean. [Comb Case with Auspicious Symbols](#), 19th–20th century. Wood, lacquer, mother-of-pearl, metal, 12 1/2 × 11 3/4 × 11 1/2 inches. Detroit Institute of Arts, Museum Purchase, Robert H. Tannahill Foundation Fund. 2015.5



Korean. [Box with Design of Auspicious Symbols](#), early 20th century. Ink and paint on ox horn panels on wood, ray skin, and metal, 10 1/4 × 20 3/4 × 12 1/4 inches. Detroit Institute of Arts, Founders Society Purchase, New Endowment Fund and funds from the Korean Community. 1986.3



Korean. [Pillow](#), 12th–13th century. Stoneware with slip and celadon glaze, 4 3/4 × 9 1/2 × 3 inches. Detroit Institute of Arts, Founders Society Purchase, New Endowment Fund, and Benson and Edith Ford Fund. 80.39



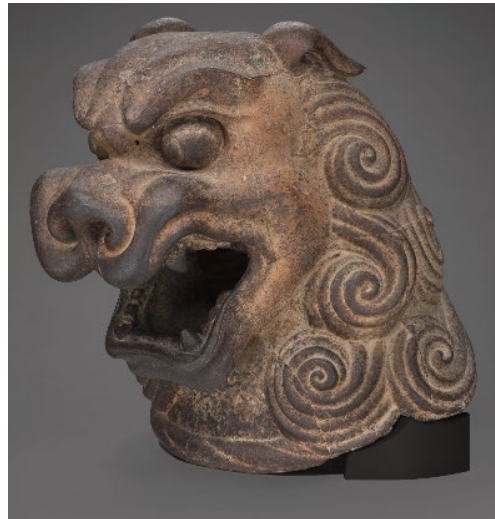
Korean. [Deep Bowl](#), 12th–13th century. Stoneware with deep porcelainous glaze, 3 3/8 × 8 inches. Detroit Institute of Arts, Gift of Dr. and Mrs. Leo S. Figiel and Dr. and Mrs. Steven J. Figiel. 74.87



Korean. [Tea Bowl](#), 12th century. Stoneware with celadon glaze and silver, 2 3/4 × 4 1/2 inches. Detroit Institute of Arts, Founders Society Purchase, Laura H. Murphy Fund. 53.349



Chinese. [Dragon Robe](#), 1736–95. Silk tapestry (k'o-ssu), gold thread, 56 1/2 × 71 1/4 inches. Gift of Annie E. Pingree in memory of her brother Willard P. Emery. 37.91



Chinese. [Lion's Head](#), 1000–1127. Cast iron; 27 1/2 × 21 × 29 inches, 344 pounds. Detroit Institute of Arts, Founders Society Purchase, Edsel B. Ford Fund. 31.281



Chinese. [Jade Cylinder](#), 8th century BCE. Jade, 9 3/8 × 2 1/4 × 2 1/4 inches. Detroit Institute of Arts, Gift of anonymous donor. 68.261



Chinese. [Ancient Ritual Vessel](#), 6th–5th century BCE. Copper alloy, Overall: 12 × 7 inches, Including base: 17 1/4 × 7 5/8 × 7 inches. Detroit Institute of Arts, Museum Purchase, Beverly Payne Acquisition Fund for Chinese Art. 2015.262



Chinese. [Dragon Robe](#), late 19th century. Woven and embroidered silk, gilded paper (wrapped silk thread), and brass, 55 × 81 inches. Gift of the Estate of Berthe McFadden Evans. 69.165



Chinese. [Ritual Wine Vessel](#), 1388–1122 BCE. Copper alloy, 8 3/4 × 7 1/2 × 4 3/4 inches. Detroit Institute of Arts, City of Detroit Purchase. 53.169



Chinese. [Deep Footed Bowl](#), 1388–1122 BCE. Copper alloy, 8 1/2 × 6 1/2 inches. Detroit Institute of Arts, Gift of Allan Gerda. 51.300



Chinese. [Money Tree](#), 25–220 CE. Stoneware with green glaze, patinated bronze, 54 5/16 × 19 5/16 inches. Detroit Institute of Arts, Founders Society Purchase; gift of Mr. and Mrs. Lawrence Fisher by exchange. 1996.29



Japanese. [Tea Caddy \(Cha-ire\)](#), 17th Century. Stoneware, glaze, ivory, 2 7/8 × 2 1/4 inches. Detroit Institute of Arts, City of Detroit Purchase. 27.552



Japanese. [Set of Equipment for the Shell Game](#), 18th Century. Lacquered wood boxes, clam shells painted in colors and gold, (Wood boxes) Height: 16 1/2 inches, Diameter: 13 1/2 inches. Detroit Institute of Arts, Founders Society Purchase, Benson Ford Fund. 1984.3



Japanese. [Noh Mask for Namanari Role](#), 17th century. Hinoki wood, paint, copper, 8 1/4 × 5 5/8 × 3 7/8 inches. Detroit Institute of Arts, Museum Purchase, Asian Department Deaccession Fund, and gifts from K. Magarian, Mr. and Mrs. Herbert V. Book, Robert H. Tannahill, Roy D. Chapin, Jr., Mrs. Walter Rundle, Mr. and Mrs. W. R. Bryant by exchange. 2013.12



Japanese. [Small Hand Drum](#), 18th century. Wood, lacquer, gold, 10 × 4 inches. Detroit Institute of Arts, Museum Purchase, funds from the Asian Art and Islamic World Forum. 2013.73



Fujino Sachiko (Japanese, born 1950). [Interconnection '15-4](#), 2015. Stoneware with matte glaze, 15 1/8 × 21 × 16 inches. Detroit Institute of Arts, Museum Purchase, General Art Purchase Fund. 2017.9



Japanese. [Set of Miniature Painting Albums](#), ca. 18th–19th century. Albums: ink and watercolor on paper Box: Wood, ink. Each album closed 3 3/16 × 1 3/4 × 11/16 in., Box 5 11/16 × 3 5/8 × 5 11/6 in. Detroit Institute of Arts, Museum Purchase, Ancient Art Deaccession Fund, City of Detroit by exchange. 2013.72



Japanese. *Spring and Summer Palace Gardens, from The Tale of Genji, 1650–1700*. Ink, color paint and gold on paper, Overall (fully open): 67 × 141 inches. Detroit Institute of Arts, City of Detroit Purchase. 27.541

Thank You

This educational resource was developed by Art teacher Angie Stokes in collaboration with the DIA Education Programs and Curatorial teams.

Lessons from Asian Art learning resources are supported by The Freeman Foundation Asian Arts & Culture Educational Funding Initiative.

